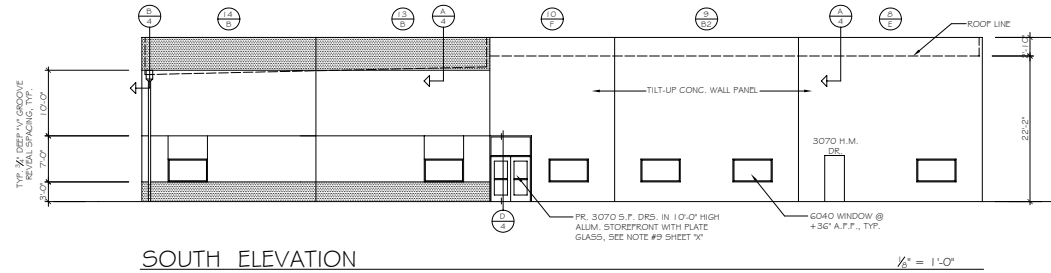
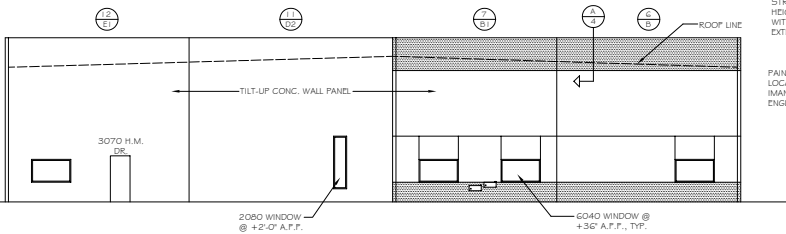


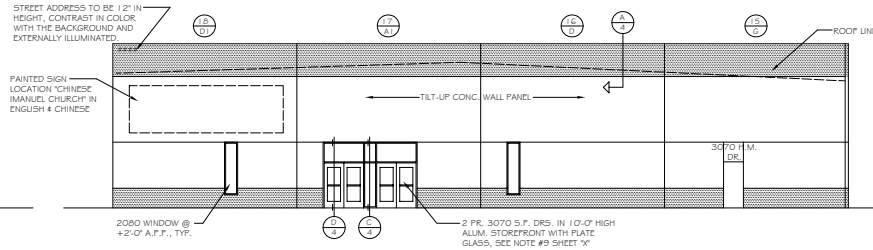
NORTH ELEVATION



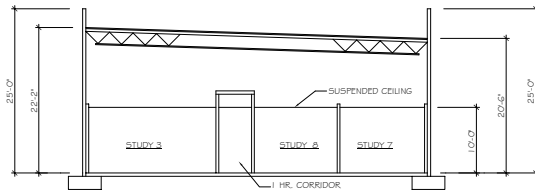
SOUTH ELEVATION



EAST ELEVATION

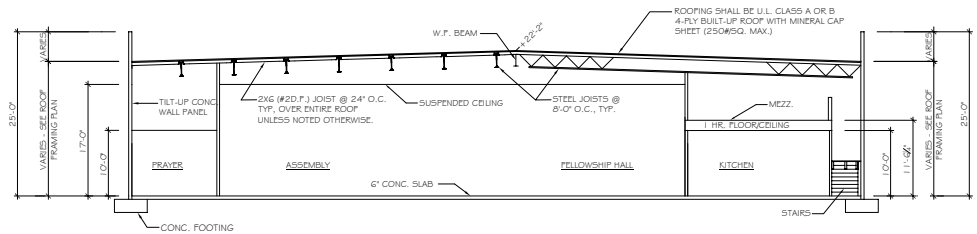


WEST ELEVATION



CROSS SECTION

1/8" = 1'-0" (B/3)



CROSS SECTION

1/8" = 1'-0" (A/3)

REVISIONS	BY

Leo McGlade & associates, inc.
3417 Auden Way, Sacramento, CA 95825 (916) 485-8390

ELEVATIONS

PROPOSED CHURCH
HUMBOLDT COUNTY OF SACRAMENTO

Date	3-2-05
Scale	1/8" = 1'-0"
Drawn	L.M.
Job	B-115-109
Sheet	3
of	3 Sheets

11-29-04